

## New Tariff eases the burden for Manweb

# ONE IN A MILLION

A NEW tariff being trialled in Aberystwyth has eased the District's overloading problems and at the time time made masive savings for Manweb.

The Menter Aberystwyth scheme has eliminated the immediate need for the Company to spend over £1 million on vital engineering work to boost the network in line with the growth in peak demand.

Reinforcement work will be required in the future as the demand for electricity increases, but Menter has shown that this can be deferred by spreading use of power over the day.

By offering cheap rate power at different times Menter has reduced the peak load resulting from a high number of Economy 7 customers. It was this high load which was creating the need for reinforcement.

Menter — the word is Welsh for initiative — is an alternative to immediate reinforcement, and was devel-

oped by the cross-divisional New Product Development Group which incorporates staff from both Power Marketing and Network Services.

Head of Tariffs and Customer Contracts and NPDG member Mike Boxall explained how the scheme worked.

"The Menter tariff was offered to Economy 7 customers with large space and water heating installations. The tariff replaced the seven consecutive night hours of E7 — normally 12.30 am to 7.30 am — with a split off-

peak regime of four hours at night and three hours in the afternoon."

Working from domestic consumer figures Aberystwyth District staff identified high use Economy 7 customers. Initial thinking had been for half of the E7

customers to transfer to Menter, but this would not necessarily have given an exact 50/50 load split, as different consumers use different amounts of power.

District Manager John Brown (then Aberystwyth's Supplies Manager) and his

staff identified large users on Economy 7 who would give the required load.

He said: "We had to adapt things to give us a system which would work in the District. Even if we'd done a straight mailing to half of our Economy 7 customers we couldn't guarantee they would all want to change to Menter. We had to implement it in an intelligent way which would work for Aberystwyth."

by Graeme Cooper

## We're over the moon!

MANWEB'S newly-appointed schools liaison officer Nigel Charlton receives a science lesson from Clwyd pupils whose schools came top in a competition to design, build and test a space capsule vehicle.

The competition was run by Clwyd, Powys and Gwynedd County Councils to coincide with a series of Manweb-sponsored lectures by Britain's first astronaut Helen Sharman.

Pictured with Nigel are (l-r) Sarah Hannan, of Ysgol Bryn Coch, Mold; Sarah Russell, of Watts Dyke Infants School, Mynydd Isa; Ben Edmunds, of Llanbedr Controlled Primary School, Ruthin and Ruth Phillips, of Bryn Offa High School, Wrexham.

(Changing Faces — see page 2).

Picture by Mike Hall



Dee-lightful  
— page 12

It's a fair cop  
— page 6

Manweb's warmer  
welcome  
— page 3

Holiday hazards  
— page 5

Northern spirit  
— page 9

True grit  
— page 7

### Local

A radio teleswitch controls the Menter system, and each customer needed an individual unit installing to move to the tariff.

To install the switches in the time available Aberystwyth 'bought in' services from the local Manweb Regional Contracting staff working under contract for the District!

The customer base was split into two so that the off-peak hours alternated between 9 pm to 1 am and 3.30 am to 7.30 am on a weekly basis. All customers received three hours of cheap rate power in the afternoon from 1.30 pm to 4.30 pm.

### Peaking

The spread of hours effectively divided the previous Economy 7 load into three separate groups, peaking at different times.

From a load planning point of view the system was ideal, but an initial problem was how to educate customers about when their Menter times were in a particular week. The District overcame the difficulty by producing a calendar for customers which told them their times each week.

Menter prices were identical to those of Economy 7, but by avoiding the period after 1.00 am, when the price Manweb pays for electricity is relatively high, it was pos-

Turn to page 2





## Schools link for Nigel

NIGEL Charlton (pictured) has been appointed Manweb's Education Officer to work with the region's schools and colleges.

Nigel (29) is based at Head Office, and will support the activities of local offices as well as being responsible for the company's educational strategy.

Originally from Warrington he joined Manweb three years ago, working in Energy Sales at Mid-Mersey before moving to Head Office. Nigel holds a Business Studies qualification from Sheffield Polytechnic and has previously worked in marketing for Hull University and the Inner London Education Authority.

He said: "Manweb already plays an important role in education through our safety initiatives and the links developed by our local district offices. I'm aiming to encourage the active participation of primary and secondary school children and teachers in understanding the importance of electricity."

# CHANGING FACES



## Goodbye and good luck!

DEE Valley District has said goodbye and good luck to four staff who have retired during June and July under the VSS scheme.

John Blything, an Electrician in the Trading Division at Rhostyllen, had clocked up 37 years' service, while Chargehand Linesman Robert Davies, of New Crane Street, had completed 32 years. Driver Patrick Conlon, also of New Crane Street, had been with Manweb for 15 years. All three retired on June 30.

Gill Dutton, a Clerical Assistant in Power Marketing (Accounts) Rhostyllen, left on July 31. She had completed 20 years' service.

● Meanwhile, three Oswestry employees left the Company at the end of June under the VSS scheme.

Carol Preuss, Supervisor in Contracting's Clerical Unit, had clocked up 18 years' service, Craftsman Electrician Ron Chetwood had completed 13 years, while Craftsman Linesman (street lighting) Brian Smith — known as Smudger to his pals — had been with Manweb for 32 years.

## It's tee time!

CENTRAL Field Unit Civil Projects 1st Engineer Vincent O'Toole has retired after more than 30 years in the Electricity Supply Industry.

Joining Manweb from the CEBG, Vincent was responsible for numerous construction projects during his years with the company, including Manweb's Prenton office, which is home to the Field Unit!

Vincent lives in Minera near Wrexham with wife Valerie and plans to keep busy in retirement, with golf and DIY.

He is pictured (centre left) receiving golf and DIY equipment from Central Field Unit Manager Dennis Davies and other colleagues



## Stylish send-off

THREE Appliance Service Electricians who between them have clocked up more than 100 years with Manweb have retired from Prenton Service Centre.

Bob Cook and Neil Jones from Wallasey and Eddie Johnson from Widnes were sent off in style by their many friends and colleagues, including Service Centre Manager Geoff Harris.

After thanking the long serving trio for their hard work over the years, Geoff presented them with retirement gifts of watches and chocolates for their wives.

Pictured (l-r centre) with colleagues are Bob, Geoff Harris, Neil and Eddie.

Neil will be keeping a Manweb connection through working with the Benevolent Society.



Aberystwyth staff with an all important Menter radio teleswitch. L-R are: Engineering Clerical Clerk Marion Thomson and Supplies Manager Emrys Hughes who planned the District implementation of Menter, and Contracting Electrician Gary Groves, one of the team who installed the switches.

## On the move

HEAD Office Principal Trainer Lesley Smith has moved to pastures new in Derby after a successful career with Manweb.

Lesley joined the company 1977, working in administration before moving to training. She ran courses on numerous topics, in both Head Office and Districts.

Training and Development Administrator Dave Buchanan said: "Lesley has many friends at Manweb and I'm sure they'll join me in thanking her for her dedicated work, and wishing her and her partner John luck for the future."



Lesley is pictured (centre right) receiving a gift of glasses and a crystal bowl from Dave Buchanan and other colleagues

## One in a million

Continued from page 1

sible to offer customers existing 'off peak' prices for the afternoon period.

The afternoon cheap rate power proved particularly popular, allowing customers to 'top up' space and water heaters as well as allowing washing machines and other appliances to be used at a cheaper rate.

Around 1,600 customers are now on the Menter tariff, but the number is not planned to be increased — a higher transfer from Economy 7 to Menter would simply shift the peak rather than leveling it.

The real test for Menter came last winter, when demand on the network was highest. The tariff succeeded in reducing the total peak in demand by around 10MW, which enabled the district to defer planned reinforcement.

Some problems were experienced in the trial. Even the

smallest interruption in a customer's supply meant the radio signal broadcast was lost, putting the customer back onto Economy 7 times. This problem is being addressed with the use of computer programmable switches.

The District also saw an increase in voltage complaints in certain areas, which required some localised reinforcement.

But overall Menter met its objectives, showing load can be managed by offering alternative tariffs in a way that delivers improved service and satisfaction to the customer.

A survey of customers in Aberystwyth showed they viewed electricity more positively after moving to Menter and the project has provided the NPDG with useful information for future products and tariffs to be offered throughout Manweb.

# Crossword number 3

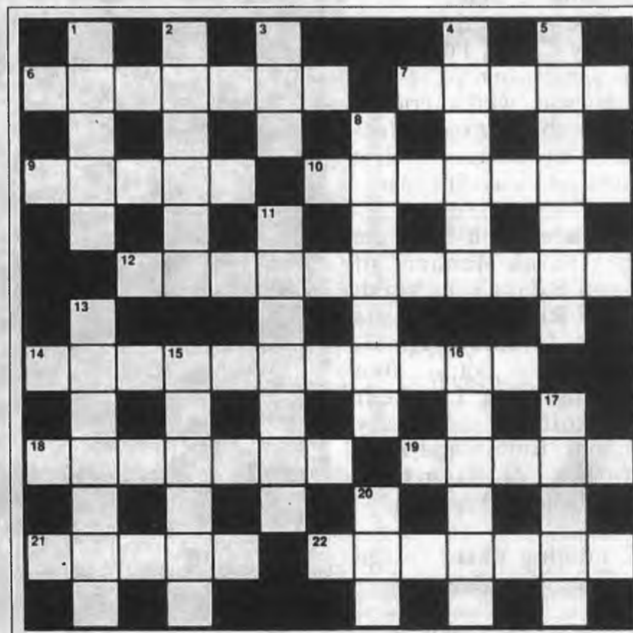
### ACROSS

6. The BBC's motoring programme (3,4)
7. Butlins are known for their holiday ones (5)
9. Ashdown, the political leader (5)
10. Seedless raisin (7)
12. Popular Spanish holiday area (5,3,3)
14. Former presenter of 'Family Fortunes' in 1967 (7)
18. 'I'm A Believer' was a No. 1 for them in 1967 (7)
19. White, wading bird (5)
21. Denis The Menace appears in this comic (5)
22. Top tourist spot in Florida (7).

Solution on page 12

### DOWN

1. Irish talk show host (5)
2. Black Lace record which was a popular holiday dance record (6)
3. What holiday-makers lie on beaches for (3)
4. A union of business firms to control prices (6)
5. Piece of professional advice (7)
8. The most ancient time-measuring instrument (7)
11. Unsteady walk (7)
13. Titled personage (7)
15. Holiday wear named after site of atomic testing (6)
16. Minor actors (6)
17. Wind blowing towards the equator from the north-east or south-east (5)
20. Noah's vessel (3).







## Favourable terms for customers!

**FOLLOWING** the announcement in last month's Contact of Manweb's entry into the gas business, Manweb Gas Ltd's first customers have signed up to take supplies from the new company.

Nationally known names who have signed up include Chester Zoo, Marks & Spencer Financial Services and National Museums and Galleries in Liverpool.

### Winning

Manweb Gas Account Executive Calum Kennedy says Manweb's deal with Alliance has hit on a winning formula which is set to bring in further customers.

He said: "Our confidence in Manweb Gas has been justified with customers coming in just at or over the 25,000 therm level, which is our target market.

"The combination of prices and terms we are able to offer shows we are pitching at the right level, and expect further developments in the near future."



Helen Connolly collecting unwanted spectacles to help Third World countries.

## Helen sets her sights on a charity spectacular

**TAXATION** Accountant Helen Connolly is planning to make a spectacle of herself ... but it's all in aid of charity!

Helen, who is based at Head Office, is collecting unwanted spectacles, including sunglasses, on behalf of Vision Aid Overseas.

"Basically what is needed are glasses in reasonable condition — cases not necessary — for shipment to third world countries" said Helen.

The specs Helen collects will be sent to Wirral-based optometrists PM & DJ Ball, who will process them for sorting in UK prisons. From there they will be sent abroad to help Vision Aid projects.

"If any Manweb employees or pensioners have any spectacles they no longer use, or if their relatives or friends can help, they can forward them to me in Room GS1 at Head Office. Collection points have also been set up at District Offices," said Helen, who can be contacted on ext. 2518 for further information.

# Manweb's warmer welcome

## Company praised for 'access' plans

by Jackie Unsworth

**THERE'S** a new look in store for visitors to Manweb's Head Office and Districts with plans in the pipeline to revamp reception areas.

And the proposed improvements, which are aimed at making Manweb more welcoming, have earned the Company praise from Chester City Council.

In granting planning permission for the Head Office alterations, the Council congratulated Manweb on the design and, in particular, the attention being paid to access for disabled people.

Work is due to begin in October on the Head Office reception area and will last for approximately five months. District Office improvements will be carried out in phases during the next two years.

Property Services Manager Peter Webb said: "The idea is to improve access to Manweb's offices both for visitors and staff and make the reception areas more comfortable, more open and inviting."

### Improvements

The improvements planned at Head Office include:

- Enclosure of the existing entrance canopy.
- Provision of automatic sliding doors.
- Easing of the present entry steps into two flights.
- An external ramp for disabled people and, within the reception area, a 'scissors' lift to raise wheelchairs to the upper ground floor level.
- A more open and welcoming reception desk which will be supervised during normal office hours by two people.
- Replacement of the existing security doors with waist-high

turnstile barriers.

Externally, much of the front entrance drive will be brick paved and a new pedestrian footway from Sealand Road will be created.

Additional parking will be provided, some of which will be designed and reserved for disabled people, together with landscaping works.

### Consulted

Staff at Head Office are being consulted about the changes, and a mini exhibition of the plans has been mounted in the Restaurant.

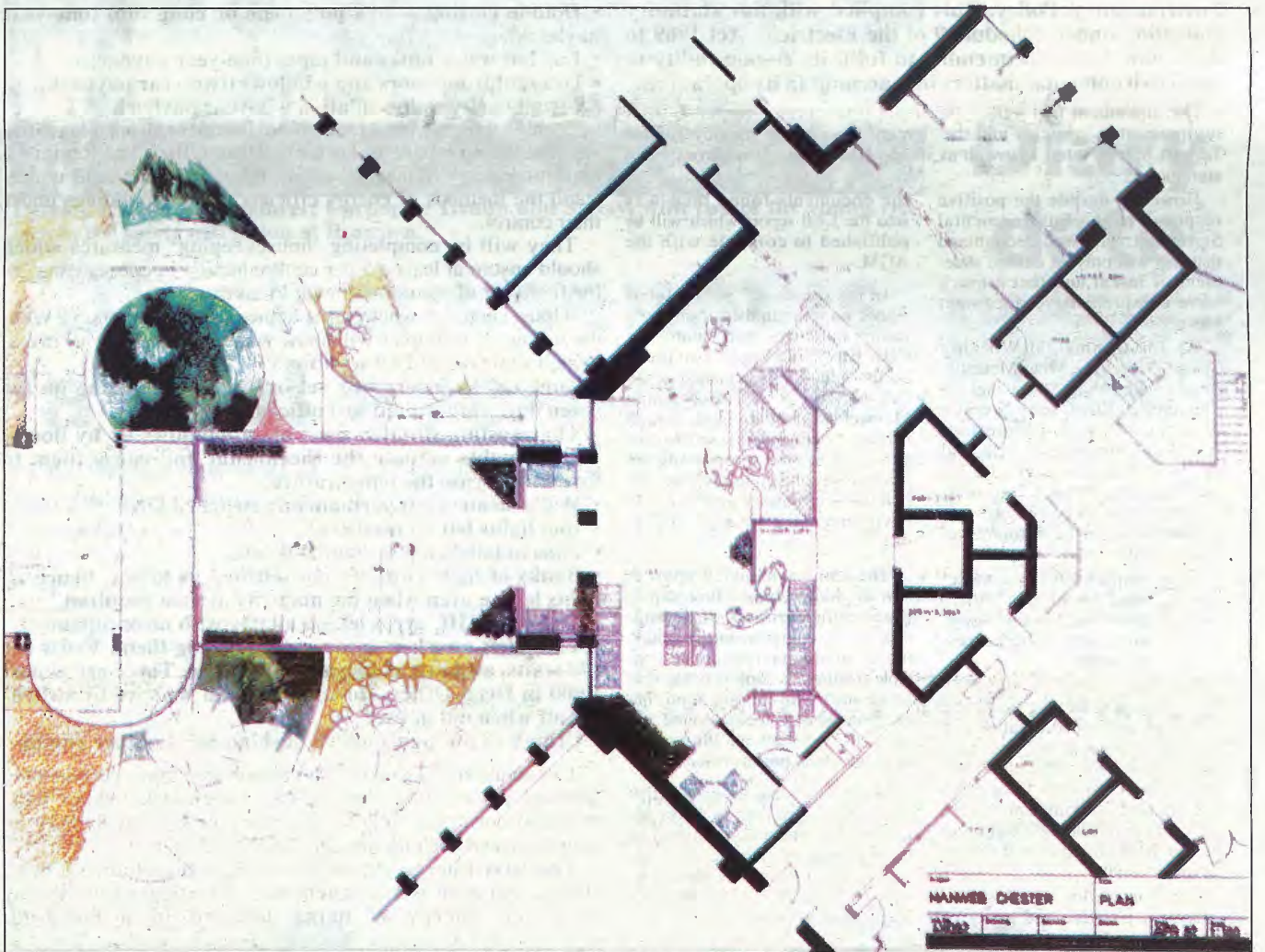
A turnstile similar to those proposed has also been installed temporarily, so that staff can try it out.

Peter Webb said: "Subject to these consultations, the Property Services Department will organise and supervise the project to cause the least disruption to staff, visitors and customers."

He added: "The District Office improvements will be in a similar vein to those at Head Office.

"We want to make the reception areas more open and attractive both to staff and visitors, and provide better access for disabled people.

"Receptionists will have the necessary information technology to answer enquiries, free drinks dispensers will be provided wherever possible, and we plan to install toilets for disabled people."



The new reception area planned for Head office, complete with ramp for disabled visitors.

## Found guilty

A FORMER Liverpool District Chargehand has been found guilty of the illegal abstraction of electricity.

Appearing at Liverpool Crown Court Peter Leonard Brislen of Bowring Park, Liverpool received a six month prison sentence suspended for two years. He had worked on Manweb's meter modernisation programme and committed the offence at his home address.

## All systems go ...

**HEAD Office** has switched on to a new paging system which has been installed in the staff restaurant.

Speakers have been incorporated into the ceiling design, enabling the main switchboard to summon staff and visitors to the telephone if they are needed urgently.

"If anyone needs to be paged for whatever reason, all you have to do is ring the switchboard. The telephonists have a special microphone linked to the restaurant," said Architectural and Building Manager Ben Foster.

The paging facility, which can also be used for making staff announcements, is linked to a sophisticated new audio system which has been

installed in the restaurant as part of a major refurbishment scheme.

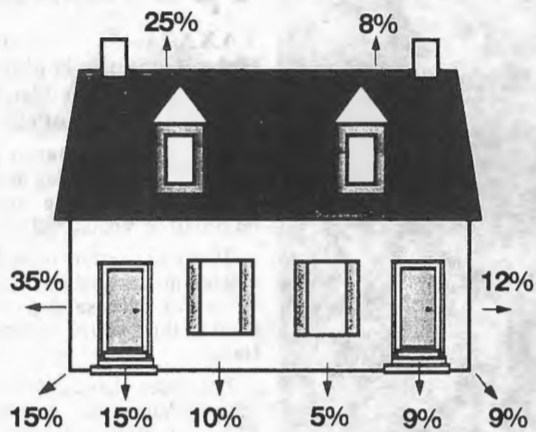
The system includes a compact disc player and double tape deck, ensuring future social functions held at the restaurant will go with a swing.

Air conditioning, new lighting and additional fire escapes have also been installed.



# Save energy...and money!

## Where Heat Escapes From



Uninsulated → Insulated

## Working for the environment

by Roddy Manson  
Regulation  
Liaison Officer

**IN April 1991, Manweb published its Statement of Environmental Policy. This complied with our statutory obligation under Schedule 9 of the Electricity Act 1989 to show how Manweb intended to fulfil its responsibility to take environmental matters into account in its operations.**

This document met with a particularly favourable response from environmental agencies and the "green" investment agency Jupiter Tarbutt Merlin rated Manweb as its top REC from an environmental standpoint.

However, despite the positive response to the Environmental Statement, Manweb recognised that this was only an outline statement of intent and that a much more comprehensive document was needed.

An Environmental Working Group, chaired by Mike Metcalfe, Head of Regulation, was set up with representatives from Network Services, Power Marketing, Trading, Corporate Health and Safety, Public Relations, Legal, and Regulator Relations to draft that document and to co-ordinate Manweb's internal environmental policy initiatives.

In December 1991 a contract was awarded to SustainAbility Limited, one of the leading worldwide environmental consultancies, to assist the Group.

By May 1992 a detailed Environmental Report had been drawn up and representatives of nearly 30 environmental and business groups, from Friends of the Earth to the Chartered Association of Certified Accountants, were invited to a consultation meeting to discuss the draft report and submit comments on it.

Reaction to this meeting was extremely positive and many of

the documents found their way into the final report which will be published to coincide with the AGM.

In the meantime, Manweb has signed on to a number of environmental initiatives, particularly the CBI Environmental Business Forum which was launched at the end of May 1992. This commits Manweb to publishing an annual Environmental Report, setting targets and publicly reporting on progress, establishing communication with employees, and whatever environmental training is necessary.

The Environmental Report is seen by Manweb as a first step in the ongoing process of demonstrating its commitment to behaving in an environmentally responsible manner. A copy is being sent to all staff with the intention that everyone should feel involved and able to comment on Manweb's environmental performance.

Manweb is keen to ensure that this report is not seen as a cosmetic exercise and is committed to taking note of the views of its employees. Comments should be sent to Mike Metcalfe, Head of Regulation, at Head Office.

**IN the June issue of Contact I wound up by saying I would detail some more measures that can be used at home which will save you money, writes Geoff Ravenscroft, Energy and Environment Manager.**

The diagram (left) shows a semi-detached home. The house to the left is inefficient in saving energy whilst the one on the right has invested in measures to conserve energy and hence running costs.

It is equally important at home as in the office to look firstly at those areas which provide the most benefit in terms of reducing energy bills. But it is also important to know when the capital expenditure will be recovered by the savings accruing from this expenditure.

One useful method is using the 'payback' principle.

$$\text{Payback} = \frac{\text{capital expenditure}}{\text{annual savings}}$$

Thus for an expenditure of £250 the annual savings might be, say, £125.

$$\text{Payback would then be } \frac{£250}{£125} = 2 \text{ years}$$

So after two years the savings have paid for the initial outlay and your pocket will be £125 per year better off EVERY year thereafter.

Listed below are some more home hints to save energy. Don't forget, saving energy helps to stop global warming and protects the environment for our children and our children's children. One kWh of electricity produces 1kg CO<sub>2</sub> and so saving 10 per cent of a typical energy bill of 3000 kWh would save 300kg CO<sub>2</sub>. Think how much could be saved if every householder in the UK saved this much pollution.

- Insulate lofts to at least 150mm (two-year payback).
- Fill gaps in floorboards and/or skirting boards (one-year payback).
- Fit aluminium foil behind hot water radiators (one-year payback).
- Double glazing — try polythene or cling film (one-year payback).
- Lag hot water tanks and pipes (one-year payback).
- Draughtproof doors and windows (two-year payback).
- Install cavity wall insulation (six-year payback).

Turning now to the Manweb environment, I am pleased to say that we now have in Districts, Head Office and Regions a team of Energy Managers whose role is to know and understand the methods of energy efficiency in the buildings under their control.

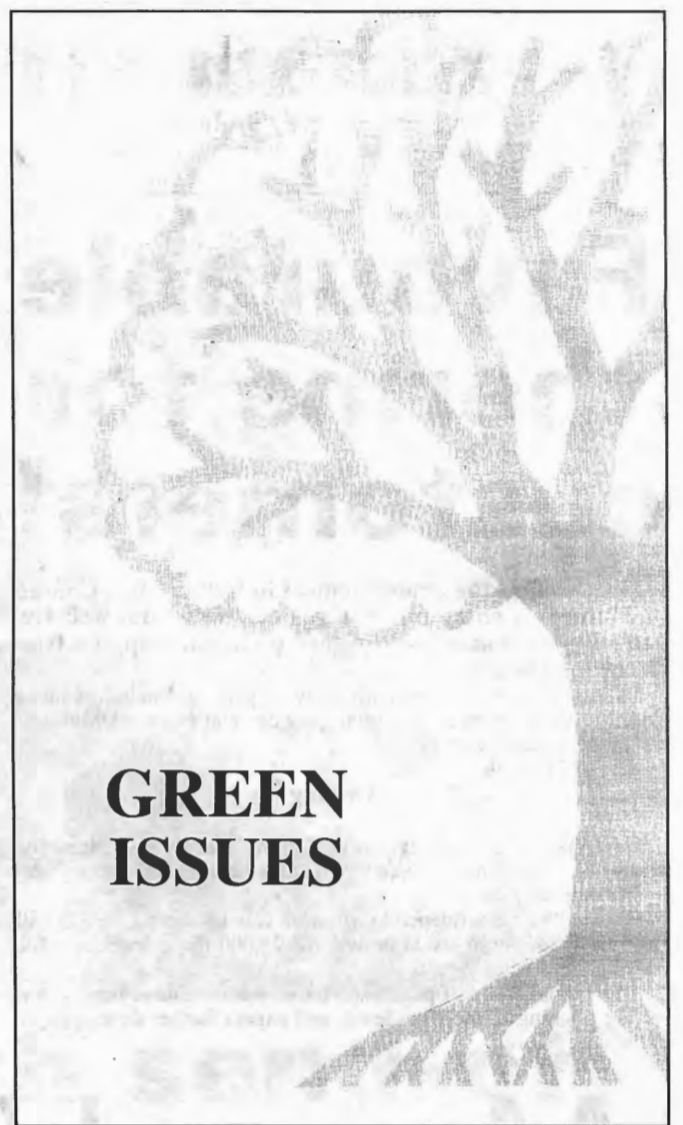
They will be completing 'housekeeping' measures which should ensure at least a 5 per cent reduction in energy usage in the first year of our commitment to save energy.

'Housekeeping, what can it achieve?' you may say. Well, the following examples will show what I've seen as I've investigated some of our District offices:

- Time clocks incorrectly set or switching heating on for seven days rather than just office hours.
- Thermostats situated near open windows or by doors. The draughts actuate the thermostat and cause them to further increase the temperature.
- Water heaters left permanently switched ON.
- spot lights left on needlessly.
- Fans in toilets left permanently on.
- Banks of light switches not labelled as to use, hence all lights left on even when the majority are not required.
- Lights in NJIC areas left on all day with no occupancy.
- VDUs left on when no operator is using them. VDUs use 120 watts, as much as two lamps at home. There are almost 1,000 in Head Office. How much could we save by switching off when not in use?
- Urinals in the Gents toilets flushing 365 days per annum.

The solutions to some of the above are simple and involve utilising the existing controls (i.e. time clocks and/or thermostats) correctly. Where necessary new controls may be required when existing measures are insufficient.

The first Energy Audit has been completed in Clwyd District. An audit is a comprehensive investigation of the way in which energy is being utilised in a building.



Recommendations for increasing energy efficiency are included in the report.

I will be completing energy audits in all District Offices and Head Office before the end of this financial year.

The first Energy Awareness Seminar was presented by Oswestry District in July. The half hour presentation was designed to allow staff to know by an audio/video presentation why we have committed ourselves to a Corporate Commitment to save energy. The seminar showed staff what they can do to help save energy at home and also in the office. If we all helped to save energy in the office we could save 3,500 tonnes of CO<sub>2</sub> in the first year of our commitment.

You may be asking what you can do to help. Well first of all get to know your Energy Manager. Their names and telephone numbers are as follows:

District		Tel. No.
North Mersey	Vinny O'Gorman	710 2145
Liverpool	Steve Matson	720 2165
Mid Mersey	Steve Walton	730 2677
Dee Valley	Colin Bradley	740 2330
North Wirral	Thomas Hill	750 2213
Mid Cheshire	Angela Meredith	760 2116
Clwyd	Phil Starkey	770 2188
Gwynedd	Dave Thomas	780 2191
Oswestry	Peter Corfield	790 2182
Aberystwyth	Mark Tracey	799 2203
Head Office	Peter Webb	700 3445
Hoylelake TC	Colin Roberts	752 235
Trading	Alan Beanland	720 2398
" "	John Bell	700 2980
" "	Alan Dwan	700 2980
Queensferry	Bob Wright	700 4210

If you have an idea for saving energy (i.e. electricity, water or fuel for our transport fleet) then talk to your Energy Manager.

More sophisticated controls are being investigated which can control a complex group of buildings from a computer. Details of this type of system will follow in a subsequent issue.

In the meantime "get switched ON to switching OFF".

# Training is now less taxing

**A NEW tax relief was introduced on April 6 this year with the aim of helping those who pay for their own vocational training.**

Individuals following a course of vocational training which leads to a National Vocational Qualification (NVQ) levels 1-4 will be entitled to pay the costs of the course, examination fees etc., after deduction of basic rate tax (currently 25 per cent).

The relief targets both taxpayers and non-taxpayers

by Helen Connolly  
Taxation  
Accountant

alike. Higher tax relief (40 per cent) is also available on a claim being made by the individual to the tax office.

No relief is available if the individual is entitled to pub-

lic financial assistance, for example a local education authority grant.

Most employees studying under Manweb's Educational Incentive Scheme will not qualify for tax relief as their tuition fees are paid directly by the Company.

Further information may be obtained from leaflet IR119 from your local Tax Office, or by contacting either David Buchanan in the Training and Development Section or Helen Connolly, Taxation Section, Head Office.



## Tackling theft

REVENUE Protection Manager Martyn Jones has been on a fact-finding mission to the USA to see how the world's power companies are tackling the problem of electricity theft.

He was among more than 300 delegates to a 3-day international Revenue Protection conference, hosted by the Peace River Electric Co-op, in Orlando, Florida.

Representatives from all the major American utilities were present, as well as guest speakers from the UK, Italy, Australia and Columbia.

Martyn said: "Many issues on Revenue Protection were discussed and it was very clear that everyone from every country shared the

same overriding problem of theft of electricity.

"Generally speaking, most utilities reported theft of electricity as representing between one and two per cent of sales, but all believed the problem was far greater, and worldwide it represents a billion dollar industry."

None of the other companies has established an elite Revenue Protection Unit like Manweb's. "I believe our set-up is unique and will represent the way to tackle theft of electricity effectively in the future," said Martyn.

## D-Day looms

THE August 18 D-Day for the final call and discount is rapidly getting closer!

Full details were given in last month's 'Contact', but please remember that:

- Call notices are being issued on August 18.
- A GREEN call notice will be used for any discounted shares held and a RED call notice for all other partly paid shares held.
- If you receive both types of notice, then it is ESSENTIAL that you make out a separate cheque for each call notice.
- Cheques must be received AND CLEARED by Barclays by September 15 1992.
- As the mailing list cannot be altered after August 7 1992, you need to contact Barclays direct if any of your particulars change after that date.
- The National Helpline Number for any queries which you may have is:

071 329 6732

This number is available between 9.00 a.m. and 5.00 p.m. from August 19 1992.

## Threat to ponies

AN SOS has gone out to Manweb staff to help save a pony sanctuary under threat of closure.

Since the work of Dan's Farm in Ramsbrook Lane, Hale, was featured in Contact last year, the charity's fortunes have taken a turn for the worse.

A massive cash injection is needed to carry out urgent repairs to the drains. Unless £2,500 is found, the local Council will close the Farm down.

Dan's Farm currently houses 34 unwanted and cruelly treated ponies. The sanctuary is run by volunteers, including St John's

Shop Assistant Gloria Perkins, who give up their time and money to keep it open.

The Farm relies on people fostering the ponies each year to pay for food and vets' bills.

A raffle has been set up to raise an emergency fund, and Gloria Perkins has donated the first prize of £100. There is also a £50 second prize and £25 will go to the winner of the third prize. Tickets, costing 20p each, are available from Gloria at St John's Shop, from S Gumley at Heswall Shop and Alex Lewis in Shop Operations.

## SAFETY



# Holiday hazards to avoid

by Phil Hughes

THE holiday season is with us again and many of us will be looking forward to some sunshine and long, idle days spent doing as little as we can get away with. Other, more active beings, will be enjoying all kinds of leisure activities such as painting, photography, canoeing, walking and abseiling.

This article, though, is directed at those of us and our families and friends who sail, fish, operate CB radios or take holidays on caravan or camping sites.

Every year at this time we get reports of fatal accidents when people have been electrocuted whilst enjoying themselves. These reports are particularly distressing when they refer to children. In every case the person killed had made contact with live overhead lines. Here are some of the more recent ones.

### Mast

- Out for a day's sailing the family stopped the car in the car park, unhitched the boat trailer and manhandled it towards the water. The mast was still up and as the boat passed under an 11,000 volt line the mast touched the wires and the man of the family was fatally electrocuted.
- Fly-fishing calls for the fishing line to be extended before the fly rests on the water and the angler whips the line back and forth to gain length. Some of the rods used are made of carbon fibre and many of the lines have a carbon core. One fisherman caught his line in overhead wires. He was electrocuted.
- Dad was very proud. He'd built a powered model aeroplane and was eager to show it off to his wife and little lad. They all went into the field at the back of their house to fly the plane. An 11,000 volt overhead line ran across the field. The plane flew into the line and the man was electrocuted through the control wire in front of his family.
- The radio enthusiast parked his car where he had always parked it. He erected a 25 ft sectional aerial on the roof and began to contact other enthusiasts on the CB band. After the session was over, as he was dismantling his aerial it came into contact with an overhead line. He was electrocuted.
- The caravan site was in a lovely spot but TV reception was poor. In order to get a better picture Dad fixed his TV aerial to a long alloy scaffolding tube. His son helped him to raise the aerial but, as they were manoeuvring into position, it hit an overhead line. Both were killed.

A morbid catalogue of accidents? Certainly, but they all happened and could happen to you or your nearest and dearest.

### Doors

Don't let it happen. Tell everyone — before doing anything out of doors to make sure there are no overhead lines which could be touched. And if you don't know whether the line is an electric line or a telephone one, play safe and avoid it anyway.

Talking of playing safe reminds me. Don't forget to tell the children. If their kite gets tangled in the overhead line they should not try to retrieve it. They should go home to mum or dad and get them to contact us.

Enjoy your holidays — SAFELY.



Derek Jackson, 1st Engineer, Corporate Health and Safety, with two of the young visitors to the safety exhibition at Runcorn.

## Black museum is a real eye-opener

LESSONS in safety were on the timetable for children who attended a summer fete at Runcorn High School ... courtesy of Manweb.

Mid Mersey District and the Corporate Health and Safety Section Head Office joined forces to stage a safety exhibition at the fete, and the display was a real hit with the young visitors.

Centrepiece was the Manweb caravan containing a 'black museum' of dangerous electrical appliances, including faulty irons, kettles, radios and vacuum cleaners.

Children were encouraged to try and identify the hazards.

There was also a display of posters and safety paintings produced by children from Manweb's region.

First Engineer Derek Jackson, of the Corporate Health and Safety Section, said: "The exhibition was a great success, and the black museum was a particular eye-opener for the children who visited."

## Long service

CONGRATULATIONS to the following staff who have clocked up 20 or 30 years' long service during July.

30 years: Head Office — Harold Longden, 2nd Engineer; Colin Herbert, Corporate Health and Safety Manager; Jim Brown, Shop Services Manager; Dee Valley — Nigel Ralphs, Meter Reader, New Crane Street.

20 years: Head Office — Leslie Thomas 3rd Engineer; Michael Budd, Estates Surveyor; North Mersey — Dennis Judge, Meter Reader; Dee Valley — Gillian Dutton, Clerk, Consumer Accounts; North Wirral — Sydney Davies, Joints Mate; Clwyd — David Parry, Mains Foreman, Narrow Lane.

## Diary date

THE annual general meeting of the Retired Members' Section of Nalco's Merseyside and North Wales Electricity Branch will be held at Head Office on Thursday August 27 1992, starting at 2pm.

## Sure to click!

THE winners of contact's Fuji Camera Competition are retired employee Mr D R Evans of Lisburne Terrace, Abertywyth, and Howard Crompton, of Energy Sales, Mid Mersey District, who both correctly identified the famous photographer as DAVID (Bailey). Their prizes — two fantastic Fuji DL-500 cameras each worth £139.99 — are now on the way.

• Fuji DL-15 cameras, as advertised in the May issue of Contact, are still available at the special low price of £25.99. The cameras normally retail at £41.99 and to order one all you have to do is complete the coupon below and send it along with your cheque and postal order made payable to R&J Enterprises to: PO Box 2328, London E14 6PL, Att. R&J Enterprises.

### Order Form

I wish to order the following camera(s)

DL-15 Fuji Camera @ £25.99 inclusive price

I enclose my cheque/postal order for .....

Signature .....

Please complete BOTH labels in block capitals

Name .....

Address .....

.....

.....Postcode .....

Name .....

Address .....

.....

.....Postcode .....



Army Benevolent Fund

## Concert

at Bodelwyddan Castle

The Band of the 1st Battalion The Royal Welch Fusiliers and

The Trelawnyd Male Voice Choir

on Tuesday 22nd September, 1992

7.00 for 7.30 p.m.

FOR TICKETS CONTACT DOUG HARDIE  
HO TRANSPORT 700 221



# It's a fair cop!

## Staff in deep trouble with the police — but it's all in good fun

MANWEB staff copped for a double drenching when they took on Cheshire Constabulary in a charity tug of war competition across the Sankey Canal at Warrington.

Raising money for handicapped children in Halton and Warrington Hospital's Scanner Appeal, the two teams were an arresting sight as they flexed their muscles for a 'best out of three' challenge.

The Manweb team — Widnes Shop Manager Mark Sherrington, Widnes Sales Assistant Kevin Kehoe, St Helens Shop Manager Ian Warlow, Runcorn Shop Manager Brendan O'Meara (Captain), Alex Lewis from Head Office Shop Operations, and their anchor man, Peter Tunney, of the Mains Department at Mid Mersey — were first in line for a dunking after their opponents won the toss and opted for the higher bank.

Tugging from the lower bank had obvious disadvantages and Brendan's team were soon in at the deep end!

It was a case of second time lucky when the Manweb team swapped banks with their opponents, and it was the turn of the burly bobbies from the Northern Traffic Unit in Widnes to make a splash.

But the tide turned for the third match. The police again won the toss, pulled from the top bank and sent the Manweb lads to a watery end.

But all was not lost and Manweb's team managed to raise around £200 through sponsorship. And already they are hatching their revenge, with plans for a re-match some time in the future.

**Story: Jackie Unsworth**  
**Pictures: Adrian Chesworth**



Heave-ho. The Manweb team has already had a ducking in the canal and plans revenge.



Oops! An unlucky Manweb team member goes in at the deep end, to the amusement of spectators on the bridge.



Above: revenge is sweet and it's the turn of the police to get a drenching.

Below: The contest comes to a watery conclusion when the entire Manweb team is pulled into the canal.



Drying off in the sunshine — the two tug of war teams were an

## Up for grabs

POST

Dear Editor

I have been turning out some old papers and found a booklet entitled 'Urban District Council of Hoylake Electricity Undertaking 1989-1948.'

I am 85 now and my husband Eric would have been 87, but he died in 1981. We have no family so I thought when anything happens to me this booklet would most likely be thrown away. I thought some of the present staff might be interested, especially if you had not got any records as early back as 1989. There's a big difference between 1989 and 1991!

Mrs E W Morgan  
Sandtoft Private Retirement Home  
70/72 Alderley Road  
Hoylake  
Wirral L47 2BA

P.S. I look forward to Contact. It gets better and better with colour pictures and everything.

Editor's note: Mrs Morgan's booklet is available on a first come first served basis from Public Relations, Room 5E1, Head Office. (tel. ext. 2090).

## Drop us

DO you have a view you'd like to air? Then why not drop

Write to: The Editor, Contact, Road, Chester CH1 4LR, making address or work location. All letters and your name can, upon r

There's a free Parker Rollerba (offer applies to staff, retired emp

## Thanks for

Dear Editor

I was discharged from the Countess of Chester Hospital just a week ago and whilst I was able to express my appreciation and thanks to those who visited me, in no way could I embrace the majority of get well wishers.

A new electric blanket has been purchased with some of the magnificent collection made on my behalf. To stand in front of my dear friends once again and express my love and appreciation for their kindness is, at this stage I'm afraid, just wishful thinking — I have indulged in quite a lot of that of late.

## First class res

Dear Editor

May I thank you very much for publishing my letter recently in your Postbag in Contact. As a result of your help I have received lots of used postage stamps for the Guide Dogs for the Blind Association and they came from past and present employees of Manweb.

I hope that if th

age your readers' have already don

## Special holiday for Contact re

THINKING of taking a holiday? Travel group Aquasun has deal for Manweb staff, their families and retired employees. All Malta holidays booked from the Aquasun main brochure.

Aquasun Discount Offer

Holiday cost per person

Between £100 - £200	£10 discount per
Between £201 - £350	£15 discount per
Between £351 - £450	£20 discount per
Between £451 - £550	£25 discount per
Between £551 - £799	£30 discount per
Between £800 - £999	£35 discount per
£1,000 and over	£40 discount per p

Another division within the Aquasun group is the Retail/Business discounts apply to any of their worldwide package holidays, including Greece. Travel insurance is compulsory when booking holidays with Aquasun. Anyone wishing to take up the special offer can contact Aquasun's t



# True grit

## Teams take to the hills for a test of stamina

MANWEB staff proved they had true grit when they took to the hills for a weekend of action and adventure. They were among electricity workers from throughout the United Kingdom competing for the inaugural Power Challenge '92 Trophy at Bowhill in the Scottish Borders.

But it was a team from National Power's Ferrybridge Power Station who romped into first place, beating 37 other teams in a gruelling two-day test of teamwork, stamina and initiative. Manweb fielded two teams of six, who finished in 20th and 25th place.

The Power Challenge was devised by Creag Mhor Ltd, a company formed by ex-Operation Raleigh Venturers, to bring together teams from across the electricity industry.

To take part, the teams had to pledge to try and raise over £900 through sponsorship towards Raleigh International's Youth Development Programme, a special scheme that enables young handicapped and underprivileged people to take part in international expeditions.

When all the sponsorship money has come in, Manweb's two teams expect to have raised at least £2,500, and this includes a donation from the Company.

Manweb's entry in the competition was coordinated by Head Office Business Systems Controller Brian Sheppard, who captained the team that took 20th place. He said: "We did quite well considering we only had six weeks to prepare. But now that we know what to expect, we mean to do even better next year!"

The second side was captained by Mid Cheshire District Manager Jeff Hunt, whose team was ahead of Brian's until the very last stage of the contest!

During the Power Challenge, all 228 competitors — ranging in age from 17 to 56 and many of them in mixed sex teams — took part in an intensive and almost non-stop 30-hours of tasks.

Many of the stages took a deliberately electrical theme, including:

- Building electrically-powered egg-transporting vehicles using parts gathered during an orienteering event.
- Completing and building an electrical circuit board using a mountain relay bike to convey instructions from base to the circuit builder.
- Building a 'rocket launcher' using bamboo canes, cartons, string and liberal amounts of explosive.

The competitors, many of whom admitted they had never tackled anything so physically and mentally taxing in their lives, also had to find their way through obstacle courses, quick-fire tests of mental agility and bivouacing.

### Rabbit

They even had to apply bush cooking skills to prepare a rabbit stew during the early hours whilst making ready their overnight bivouac high up in the Border hills.

After a gruelling final stage on Sunday afternoon, which involved five miles of uphill navigation before plunging into a series of muddy obstacles in the dense woods above Bowhill, the teams returned home exhausted but elated.

The Power Challenge '92 Trophy was presented to the winning Ferrybridge team by former Liberal Leader Sir David Steel MP, and a special prize — the Team Spirit Award — was presented to a second National Power side representing Pembroke Power Station.

To prepare for the Power Challenge, Manweb's two teams — made up of District and Head Office staff — had embarked on a programme of fitness training. Team members had to be able to run six miles non stop, and their training programme included a 15 mile walk/run on the fells, canoeing on the River Dee and orienteering in Delamere Forest.

"We all managed to get lost, including myself — even though I set the course!" said Brian, who plans a much tougher training programme next year.

He added: "The Power Challenge was a hugely successful event and we all enjoyed taking part, although it was extremely hard work at times. But we all got a lot out of it, not just in terms of satisfaction at completing the course but also from being part of a team."



Hats off to the Manweb Power Challenge teams! Back row, l-r, Geoff Robinson (CFU), Graham Slatter (Mid Mersey Energy Sales), Robbie Hughes (Jointer, Llandudno Junction), Neil Hunter (North Wirral Administration), Steve MacKenzie (Oswestry Garage), Brian Jones (Senior Project Leader, Head Office Business Systems), Dave Stephens (Deputy Computer Operations Manager, Head Office).

Front row, l-r, Andy Miley (Liverpool Foreman Fitter), Jeff Hunt (Mid Cheshire District Manager), Phil Currie (Management Services, Head Office), Bill Stringer (Mid Mersey Shift Electrician), Brian Sheppard (Business Systems controller, Head Office).

## Power Challenge diary

by Brian Sheppard

### DAY 1 — SATURDAY JUNE 27

0630 — Teams arise, wash, pack rucksacks with sleeping bags, karrimats, waterproofs and spare clothing for the days ahead.

0800 — Breakfast; 1 hard-boiled egg, 2 rashers of bacon, 1 bread roll, coffee.

0930 — Registration; teams given rations for the event:

- Per person - 2 Mars bars
- 2 Muesli bars
- 2 Tins sardines
- 1 Orange drink mix
- 2 packets nuts & raisins
- 1 Sachet dehydrated muesli
- 2 Boiled sweets
- 2 Sachets each of - coffee
- dried milk
- sugar

### RE-PACK RUCKSACKS TO GET FOOD IN!

1030 — Aerobic Session — 1 hour — energetic, but enjoyable (co-ordination a bit of a problem). Teams beginning to think they have already used up too much energy.

1130 — Event 1 — 4.5 mile team navigation race through forest and open hillside. At Checkpoint 2, each team was given a banner and a metal toolbox that had to be carried EVERYWHERE.

To Event 2 — Grid Reference 419270 — Distance 1.25 miles — time allowed 15 mins.

1415 — Event 2 — Mountain bike relay (4x400 metre stages — quite steep) to pass verbal messages to reconstruct a circuit board.

To Event 3 — GR 416265 — Distance 0.3 miles — time allowed 15 mins.

1630 — Event 3 — Build a derrick from scaffolding to raise a weighted sack from a gully.

To Event 4 — GR 430283 — Distance 1.5 miles — time allowed 15 mins.

1800 — Event 4 — Construct an electronic morse code system across a river (cold), driven by a water-powered generator built from a bicycle wheel and some tin cans.

To Event 5 — GR 432275 — Distance 0.5 miles — time allowed 15 mins.

1945 — Event 5 — Five small problems to be solved in 14 mins each; e.g. 3 barrels and 2 planks to be used to transport the team as far as possible without touching the ground. Time allowed between problems = 3 mins. (so had to run); total distance covered = 1.5 miles.

To Event 6 — GR 432278 — Distance .25 miles — time allowed 15 mins.

### 2200 — Event 6 — THE BIVOUAC!

Find your food; teams had to walk 1 mile to the top of Harehead Hill to find their food 'stash'. Each team was given a billy-can containing potatoes, onions and carrots, and a black plastic bag containing 1 dead rabbit, fur included!

A further mile or so across country to the bivouac site, where each team was given 4 wooden poles, two plastic sheets and some firewood. Dinner was ready at approx 1.30 a.m. — tasted

delicious! To bed (?) at 2:00 a.m.

### DAY 2 — SUNDAY JUNE 28

0500 — Teams arise, take down bivouacs, clean billys, clear site and return to base camp to be 'bagged' back into the field. The piper was supposed to go to the bivouac site and wake everybody up, but some of the earlier teams met him on their way down — perhaps their bivvy was not as comfortable as ours?

0700 — Breakfast — a cup of coffee and a bowl of hot water — remember the dried muesli!

Here we go again . . .

To Event 7 — GR 422283 — Distance 1.0 mile — time allowed 15 mins.

0740 — Event 7 — 3-mile orienteering course to find bags filled with various items of equipment. The task was then to build a device that would transport an egg along the ground — embarrassment prevents me from saying how far ours moved.

To Event 8 — GR 433273 — Distance 1.0 mile — time allowed 15 mins.

1000 — Event 8 — construct a countdown device (timing between 1 and 5 minutes to the second) to detonate a rocket; equipment provided = 1 piece of guttering, a few tin cans, some bamboo canes, lollipop sticks and some water. NASA need not be concerned.

To Event 9 — GR 433273 — Distance 0.3 mile — time allowed 15 mins.

1105 — Event 9 — Build a raft from logs and inner tubes to transport all team members across the lake — fortunately it was warm and sunny at this stage. Mission accomplished.

To Event 10 — GR 433273 — Distance 0.3 mile — time allowed 15 mins.

Lunch — provided you had some rations left — sardines never tasted so good.

1330 — Event 10 — Grand Finale — a 5-mile route march around grid references; some of the GR's were provided as problems which had to be worked out to get the numbers.

On returning to the forest, 8 special stages could be attempted to gain bonus points; highlights were the muddy ditch crawl and the rope slither over the slimy swamp.

1700 — Sprint (!) to the finish for the last time — quick photo call then straight to the beer tent!

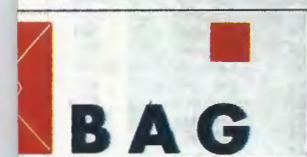
1830 — At last — a chance to clean up and dinner to look forward to — reality was a cold shower — the generator had failed.

2000 — The Ceilidh — spit-roasted pork, a few more beers and dancing (?) to a traditional Scottish folk group.

Overall — Total distance covered = 25 miles; we were glad to see the back of that flag and tool box. Quite physically and mentally demanding, but very enjoyable. The weather was kind — it would have been a bit different had it been wet and/or windy. Teams finished 20th and 25th out of 38 teams; we would hope to do better next year, having more idea of the activities involved — training begins in January!

An excellent weekend!!!

resting sight.



## a line

to share or an opinion you'd like to see in a line?

From 5E1, Manweb plc, Sealand. Please include your name and address. All correspondence is dealt with in strict confidence. Requests for copies will be witheld.

Open for every letter published (names and their families only).

## everything

It is 4.30am and I look out at the sea. It promises to be another warm and sunny day. My blessings.

Del Hall  
Ex-Secretary  
Manchester and Head Office Retired  
Staff Association  
c/o Cedar Lodge  
School Lane  
Guilden Sutton  
Chester

Editor's note: Sadly, Del, who was suffering from cancer, died on July 1st, just days after writing this letter. His funeral was held at St Mary's Church, Handbridge, on July 23.

## response

Letter is published it will encourage you to continue the very kind work they do. Thank you all once again.

Mr J McDowell  
14 Brandwood Avenue  
Chorlton, Manchester  
M21 2PP

## offer readers

Come up with a super discount offer, listed below, apply to

erson  
erson  
erson  
erson  
erson  
erson

use Travel Agency and the same for Cyprus, Portugal, Spain and the sun. Consultants on 071 258 0304.



# ir cop!



Leave-ho. The Manweb team has already had a ducking in the canal and plans revenge.



Team member goes in at the deep end, to the amusement of the onlookers.



Team member goes in at the deep end, to the amusement of the onlookers.



Team member goes in at the deep end, to the amusement of the onlookers.



Drying off in the sunshine — the two tug of war teams were an arresting sight.

## Up for grabs



Dear Editor

I have been turning out some old papers and found a booklet entitled 'Urban District Council of Hoylake Electricity Undertaking 1989-1948.'

I am 85 now and my husband Eric would have been 87, but he died in 1981. We have no family so I thought when anything happens to me this booklet would most likely be thrown away. I thought some of the present staff might be interested, especially if you had not got any records as early back as 1989. There's a big difference between 1989 and 1991!

**Mrs E W Morgan**  
Sandtoft Private Retirement Home  
70/72 Alderley Road  
Hoylake  
Wirral L47 2BA

P.S. I look forward to Contact. It gets better and better with colour pictures and everything.

*Editor's note: Mrs Morgan's booklet is available on a first come first served basis from Public Relations, Room 5E1, Head Office. (tel. ext. 2090).*

## Drop us a line

DO you have a view you'd like to share or an opinion you'd like to air? Then why not drop us a line?

Write to: The Editor, Contact, Room 5E1, Manweb plc, Sealand Road, Chester CH1 4LR, making sure you include your name and address or work location. All letters are dealt with in strict confidence and your name can, upon request, be withheld.

There's a free Parker Rollerball pen for every letter published (offer applies to staff, retired employees and their families only).

## Thanks for everything

Dear Editor

I was discharged from the Countess of Chester Hospital just a week ago and whilst I was able to express my appreciation and thanks to those who visited me, in no way could I embrace the majority of get well wishers.

A new electric blanket has been purchased with some of the magnificent collection made on my behalf. To stand in front of my dear friends once again and express my love and appreciation for their kindness is, at this stage I'm afraid, just wishful thinking — I have indulged in quite a lot of that of late.

It is 4.30am and I look out at what promises to be another warm and sunny day. My blessings.

**Del Hall**  
Ex-Secretary  
Chester and Head Office Retired Staff Association  
c/o Cedar Lodge  
School Lane  
Gulden Sutton  
Chester

*Editor's note: Sadly, Del, who was suffering from cancer, died on July 15, just days after writing this letter. The funeral was held at St Mary's Church, Handbridge, on July 23.*

## First class response

Dear Editor

May I thank you very much for publishing my letter recently in your Postbag in Contact. As a result of your help I have received lots of used postage stamps for the Guide Dogs for the Blind Association and they came from past and present employees of Manweb.

I hope that if this letter is published it will encourage your readers to continue the very kind work they have already done. Thank you all once again.

**Mr J McDowell**  
14 Brandwood Avenue  
Chorlton, Manchester  
M21 2PP

## Special holiday offer for Contact readers

THINKING of taking a holiday? Travel group Aquasun has come up with a super discount deal for Manweb staff, their families and retired employees. The offers, listed below, apply to all Malta holidays booked from the Aquasun main brochure.

### Aquasun Discount Offer

#### Holiday cost per person

Between £100 - £200	£10 discount per person
Between £201 - £350	£15 discount per person
Between £351 - £450	£20 discount per person
Between £451 - £550	£25 discount per person
Between £551 - £799	£30 discount per person
Between £800 - £999	£35 discount per person
£1,000 and over	£40 discount per person

Another division within the Aquasun group is the Retail/Business House Travel Agency and the same discounts apply to any of their worldwide package holidays, including Cyprus, Portugal, Spain and Greece. Travel insurance is compulsory when booking holidays with Aquasun.

Anyone wishing to take up the special offer can contact Aquasun's travel consultants on 071 258 0304.



### North Wirral (Electricity) Retired Staff Association

On retirement you may feel you would like to keep in contact with your old colleagues. If so, why not join our Association by completing this coupon and returning it with the appropriate remittance to the Hon. Treasurer: Mrs E Hardcastle, 5 Rosslyn Drive, Moreton, Wirral.

The annual subscription, payable on May 1 each year, is £2 for self and partner, £1 for single person.

Meetings are held at 2.30pm the first Wednesday of the month in the staff restaurant at Prenton.

Name.....  
 Address.....  
 Signature.....

Further information from the Secretary, Mrs L Martland at Manweb North Wirral District Office, Prenton Way, Birkenhead.

# Joan's star role



MANWEB customers in Sandbach can see their local Shop Manager without leaving their armchairs since Joan Jones was chosen to star in the Company's latest TV ads.

Manweb's advertising agency Still Price: Lintas decided Joan (pictured) was a 'natural' for television after seeing her featured with other staff in Manweb's pre-privatisation posters.

Although she is only on screen for a few seconds Joan had to go through two days' filming at Buckinghamshire's famous Pinewood Studios (which coincidentally is a Manweb Second Tier customer!).

She said: "It takes a long time to get all the lights and everything set up, and then they'll move everyone around to try a different camera angle. It's definitely not glamorous, but it was very enjoyable and I would do it again!"

## Discount for drivers

HENLEY'S of Chester has extended its special offer for motoring Manweb staff and retired employees. Available until the end of October 1992, the offers are:

Full service.....£65.00 inc.  
 Full car alarm.....£90.00 inc.

The prices include valet, collection from and delivery to the surrounding area. Further details from Henley's of Chester, Sealand Road, Chester, CH1 4LQ, tel. 0244 390009.

## Just the ticket!

A VISIT to the Discovery Dome at Bodelwyddan Castle will be just the ticket for five lucky Contact readers and their families.

Family tickets are now on their way to the winners of our Discovery Dome competition, who gave the following correct answers: 1. Yes, elephants do have teeth. 2. The planet nearest the sun is Mercury. 3. The live wire in an electric plug is brown.

The winners are: Mrs G M Blackburn, of Larton Road, Newton, West Kirby, Wirral; Mr C E M Hobson, of Primrose Avenue, Haslington, Crewe; P Portch, of Head Office; Mrs M E Davies, of Hampton Close, Oswestry, and eight-year-old Lauren Gibson, whose dad William is an Appliance Service Technician at North Wirral District.

# Obituary

IT is with sadness that Contact reports the deaths of the following retired Manweb employees.

**Richard Alexander Graham**, 85, who died on April 4, was a Joiner's Mate at Liverpool before retiring in 1972.

**Eleanor McCook**, who died on June 7 aged 71, was a Clerical Assistant at Head Office before retiring in 1980.

**John Rees Davies**, who was a Driver at Aberystwyth until retirement in 1974, died on June 16 aged 83.

**Thomas Roberts**, 82, who died on June 18, retired in 1975 from North Wirral, where he was a Bricklayer.

**Charles William Butler**, a Switchboard Attendant at Oswestry before retirement in 1979, died on June 22 aged 77.

**Lilian Mary Cooke**, who died on June 24 aged 72, was a Clerical Assistant at Liverpool before retiring in 1979. Lilian was the mother of Chris Byrne, Admin Assistant in Property Services, and mother-in-law to Printing Manager Pat Byrne.

**George Herbert Bowen**, 76, died on June 28. He was a 2nd Engineer at Clwyd until retiring in 1978.

**John Hughes**, who was a Senior Sales Assistant at Clwyd until retirement in 1986, died on July 9 aged 68.

**William Henry Jones**, 86, who died on July 13, retired in 1968 from Area 2/3, where he was a Meter Reader/Collector.

**Delme Colin Hall**, a Chargehand Installation Inspector at Dee Valley before retiring in 1978, died on July 15 aged 78. Del was the former Secretary of Chester and Head Office Retired Staff Association (see Postbag, page 6).

**Griffith Richard Orritt**, 80, was a Meter Reader in Gwynedd before retiring in 1977. He died on July 16.

**William Rea**, 73, a Foreman at Liverpool, retired in 1975. He died on July 18.

**Arthur William Price**, who died on July 18 aged 74, was a 3rd Engineer at Clwyd until retirement in 1976.

**William James Lindsay Taunton**, 71, who died on July 20, was a Foreman at North Mersey before retiring in 1985.

# Review of the RECs' results

THIS month we review the recently announced results of the 12 Regional Electricity Companies (RECs) for the year to March 1992.

It is interesting to analyse the results and this is best done over a 12 month period because of the highly seasonal nature of the RECs' business.

by Geoff Standing

In the table (right), some of the important stock market ratios previously covered in 'Taking Stock' are calculated. Results of the Generators are also shown. The table shows:

**Turnover:** The Turnover gives an indication of the relative sizes of the Companies.

**Profit Before Tax:** Column B shows the actual half year Profit Before Tax for each company. The RECs' business is highly seasonal with most money coming in during the winter period. The majority of the profits should therefore be earned in the second half of the trading year. Any meaningful comparison of one REC's profit performance to another, needs to be made on full year profits.

Column 'D' shows Profit Before Tax of the companies for the full year to March 1992. It is interesting to calculate and compare the proportion of one REC's half year actual profit, to its full year estimated profit. This can be done by dividing 'B' by 'D'. The proportions vary from one REC to another.

Many factors will explain these differences. One main factor will be that income and profits earned from industrial and commercial electricity customers will be more evenly spread across the year, than the income and profits earned from domestic customers. The latter is highest in the autumn/winter period, when use of lights and heating is greater.

Thus, one would expect a lower proportion of profits to be earned in the first half of the year by a REC with domestic customers constituting the largest customer category (eg. SEEBOARD), than a REC with more industrial customers (eg South Wales).

Column 'J' shows the number of shares in issue during the year, and column 'K' shows the

fully paid share price on 15.07.92. (note: this price includes the final instalment which is due on September 15 1992 for the RECs).

**Dividends:** Column 'C' shows the net half year dividends which were paid, in Manweb's case, on March 24 1992. Column 'F' shows the full year (total of interim and final) dividends payable. The final dividend for Manweb is payable on October 5 1992.

Three key Financial Ratios can now be calculated:

**Profit After Tax attributable to each share:** This ratio, shown in column 'E', is commonly known as 'Earnings per Share' (EPS), and is one of the most important ratios in assessing a company's performance. It is calculated by dividing the profit left after providing for the company's tax liability, by the average number of shares in issue during the period. It is from this remaining profit that dividend payments are made.

In general, as the EPS of a company increases so does its share price. However, many other factors affect a company's share price. One such major factor is the City Analysts' estimates of future profits and dividend growth in 1992/93 and beyond. Significant revisions of these estimates will usually cause movements in share prices.

**Dividend Cover:** This is shown in column 'G' and is the number of times by which available profits after tax cover the dividend payment. This figure is a guide to a company's dividend paying power, ie how 'comfortable' it is in paying its dividend.

A company with a dividend cover of less than 1.0 has paid more out in dividends than it had remaining in profit. A com-

# Taking stock

## REGIONAL ELECTRICITY COMPANIES AND GENERATORS of England and Wales HALF YEAR PROFIT RESULTS AND FULL YEAR PROFIT RESULTS 1991/92

	HALF YEAR ACTUAL			FULL YEAR ACTUAL				ESTIMATED		
	A	B	C	D	E	F	G	H	J	K
	Turnover	Profit Before Tax	Dividend Per Share (net)	Profit Before Tax	Profit After Tax attributable to each share (E.P.S.)	Dividend Per Share (net)	Dividend Cover Ratio	Dividend Yield (gross)	No. of Shares in Issue	Fully Paid Share Price 15.07.92 (ie includes final instalment)
	£million	£million	pence	£million	pence	pence		%	millions	pence
Eastern	822	15	4.85	143	38.7	16.70	2.3	8.3%	270	348
East Midlands	658	25	5.10	150	50.2	17.10	2.9	6.3%	218	363
London	560	15	5.00	143	47.2	16.00	2.6	5.9%	218	378
Manweb	375	28	5.45	95	50.1	18.25	3.2	5.7%	119	428
Midlands	917	27	5.68	142	48.9	17.20	2.8	6.1%	209	378
Northern	360	26	5.55	98	59.8	18.55	3.2	6.2%	123	400
NORWEB	576	23	5.30	138	51.1	17.07	2.9	5.7%	173	414
SEEBOARD	495	6	5.00	98	53.2	17.25	3.1	6.0%	127	385
Southern	745	18	4.85	100	48.0	16.66	2.9	6.1%	270	363
South Wales	257	21	5.80	73	50.1	19.40	2.8	6.0%	102	428
South Western	363	14	5.28	83	50.8	17.40	2.9	6.1%	123	383
Yorkshire	604	33	5.20	142	48.7	17.76	2.7	5.6%	207	423
National Power	2140	202	3.00	514	28.8	9.10	3.1	4.8%	1275	251.5
Powergen	1352	97	3.05	359	31.0	9.25	3.4	4.7%	781	264

pany with a dividend cover greater than 1.0 had not paid out all its profit in dividends, but rather it has retained 'funds' in the business to finance future trading.

For example, East Midlands has an estimated dividend cover of 2.9. This indicates that it has paid out about a third of its Profit After Tax as dividends, and retained the other two thirds to help finance future operations.

**Dividend Yield (gross):** Dividends are generally paid net of basic rate tax, but Dividend Yields are usually quoted gross of tax, that is the return available to the investors before income tax is deducted at the basic rate. Because companies

normally announce their dividends net of tax, the dividend can be converted into its gross equivalent by the following simple sum:

The Dividend yields have been calculated by dividing the full year dividend (gross) by the fully paid share price, (see column 'H'). So, for an investment

$$\frac{\text{Net dividend (pence)}}{75} \times 100 = \text{Gross Dividend (pence)}$$

'75' being 100 - (25 per cent tax).

of £100 in Eastern Electricity shares on 15.7.92, it is estimated that the gross income yield on this investment would be 6.5%. In addition to this income yield the value of the shares pur-

chased may go up or down, giving a capital gain or loss.

The estimated dividend yield of the RECs is about 30 per cent higher than shares in general. Many factors may cause this gap to exist in the electricity sector, but most commentaries would infer that the above average risk of political and regulatory factors

moving against the sector's interests is amongst the main reasons.

If you have any further queries on these matters your professional advisor, bank, tax office or building society will probably be best placed to help you.

### Manweb (Chester) Sports and Social Club

**Diary Dates**  
 September 11 — Late Summer Special, 8pm to 2am, live bands and disco, bar and hot food. Members and friends.  
 December 12 — Children's Christmas Party.  
 December 18 — Members' Christmas Party.  
 January 22, 1993 — Formal Ball.

**Theatre Trips**  
 September 15 — Les Miserables, Palace Theatre, Manchester. Tickets (a few remaining) £16.50 plus coach.  
 October 15 — Barnum, starring Paul Nicholas, Opera House, Manchester. Tickets and coach approx. £15-£16.  
 Reservations and further information from Sue Linton, ext. 2538, Room GS1, Head Office.

**Section Information**  
 Badminton — The section resumes the playing season in October through to March 1993. New members welcome, Tuesday evenings at the Northgate Arena, Chester. Play starts at 8.15pm. Contact Neil Carter on ext. 3064.  
 Ten Pin Bowling — The Section is looking for new talent for the new season. League starts in Autumn 1992. Contact Kevin Gee on ext. 2654.  
 Fishing — Interested in a Deep Sea Fishing trip or 'fishy' news generally? Contact Rob Hallows on ext. 2951.

**Essentially Different**  
 Please let us know if you would be interested in any of the following:  
 • Day trips to National Trust properties and gardens.  
 • Day out to the American Adventure Theme Park, Ilkeston. Approximately £10 to include coach, entrance fee, packed lunch and entertainment on the coach.  
 • Trip to the Wedgwood Visitors' Centre.  
 • Health and Beauty treatment days/evenings.  
 • Self defence courses.  
 • Duty free shopping day.

**Elected Official and Committee for 1992/93**

Chairman	Efion Jenkins	int tel	Office ID	Room
Vice Chairman	Damian Hyland	2488	jenkiew	GS2
Treasurer	Chris Shepherd	2074	hyland	5E1
Committee	Brian Carman	2509	shephcm	GS1
	Anne-Marie Gardner	750-2150	carmab	N/Wirral
	Andrea Gardner	3485	gardam	3E1
	Wilf Jones	2251	gardam1	3S1
	Sally Kennedy	2725	joneswd	GW1
	Chris Pace	3481	kennesj	3E1
	Dave Shepherd	750-2469	pacecd	CFU
		3504	shephda	5S1
Other contacts:				
Queensferry	Anne Allen	4221		
New Crane Street	Jan Lloyd	744-410		
Chester S/store	Chris Prescott	3738		
Club Administrator	Sue Linton	2538	lintsj	GS1



CONTINUING our series about the regions that make up Manweb's contracting business in the run-up to the launch of Manweb Contracting Services Ltd, this month we focus on Northern Region.

**Report: Cheryl Stevenson**  
**Pictures: Mike Hall**

# Northern spirit

**CURRENTLY** operating from North Mersey District Office at Bridle Road, Bootle, staff of Northern Region Contracting are proving to be ever-resourceful in their approach to winning new business in their area.

The Region, stretching from Southport down to Liverpool and up to the St Helens border, is almost totally surrounded by the sister regions of Central and Eastern Contracting and by the Irish Sea.

Consequently the Region has had great incentive to turn towards a strategy of market penetration within its own area.

"It's an extremely daunting task when your home patch is one of those areas within the UK most severely hit by the current recession," said Regional Contracting Manager Ray Appleton.

In true Contracting spirit, the determination of Northern Regional staff has shown through and been rewarded by several not only large but interesting local projects.

One such project is a new development of a large tutorial block for Liverpool Polytechnic. The 'Cathedral Chambers' project has been running for several weeks and is unique in that it involves work on a specific design.

Ray said: "The building is believed to be the first construction in Liverpool for a number of years with a rotunda — a circular lead dome construction with no central support — as its centre piece.

"Contracting is providing the lighting, security and low voltage distribution systems for this architecturally aesthetic block in a contracting package valued at around £165,000."

Refurbishment of both Mersey and Stanley House tower blocks in Marsh Lane, Bootle, is another project well underway. The work for Sefton Borough Council involves ventilation, accessory wiring, storage heating, low voltage distribution and minor damp proofing.

"This is not only one of the largest projects undertaken in terms of both size — involving



**Northern Regional Contracting Manager Ray Appleton.**

182 dwellings — and value, but it is also one in which Manweb is acting as major project handler responsible for subcontracting work to the other parties," said Ray.

It's also a job which requires Site Agent Peter McKenzie to reside on site for the duration of the project.

"Now that Contracting has a firm hand in Contract Management we will be striving to obtain more projects of this type in the future," said Ray.

A third project involves an electrical installation on the set of the Channel 4 soap 'Brookside'. Work has begun to upgrade and extend the low voltage supply to this famous site, which appears on tv four times a week.

Work must fit in with the scheduled filming on the set in Childwall, and Electricians working on the project have had to swear a vow of silence in order not to disclose future plots!



**Ian Ledson, 3rd Engineer and Project Handler, on the set of Brookside with Lilian McLoughlin, Mersey TV's Assistant Company Buyer.**

## Credits roll for Ian

**COMPLETION** of the Brookside installation marked the end of an era for 3rd Engineer and Project Handler Ian Ledson, who retired from Manweb at the end of July as the project was drawing to a close.

Ian had been with Manweb Contracting for 38 years, since joining the apprenticeship programme at Lister Drive in 1954.

Over the years he worked as an Electrician in Liverpool North, a Foreman in Southport

and on the Appliance Repair team at Bridle Road. In 1984 he accepted a secondment as an Engineer at Heysham Power Station before returning to Bridle Road Contracting section in the mid-1980s as a Contracts Engineer.

Ian said he was looking forward to retirement and planned to use his entrepreneurial skills to develop a market for vehicle security gadgets and pursue interests such as walking and gardening.

## Staff are taking on new skills

**IN addition to acquiring and managing major industrial and commercial contracts, Northern Region's staff hold and are developing a variety of skills to support the total Contracting business.**

Along with major contracts, Regional Contracting Manager Ray Appleton has responsibility for policy decisions and promotional activity for domestic contracting work, including rewiring, security alarms and shower installations.

This responsibility will extend when Northern joins Eastern Region at the new Contracting offices in Birchwood, Warrington, where Eastern Region's Domestic operation and a major estimating section will also come under Ray's wing.

Under the new arrangement Ray will be assisted by his present Domestic Administration team, including Supervisor Paula Kinsella (pictured right), who will lead the administration of domestic work and manage the domestic account.

In addition she will ensure, through membership of the Quality Action Group, that the Domestic Administration operation conforms to BS5750 guidelines. Paula will be assisted by present Bootle Administrators Nicola Brady, Angela Edmondson and Ken Radley.

Northern Region is developing further office-based skills in computer aided design of electrical installations by undertaking pilot testing of a new design package which will be part of Contracting Services Limited's new independent computer network.

The package, which has been operational for several weeks, is capable of producing designs from scratch or reproducing drawings saved to disk which would previously have required manual drawing.

Time-saving from this technique is one of its greatest advantages, with trained operators able to produce or amend drawings in a fraction of the time taken to do this manually.

"The quality of drawings produced reflects the type of professionalism that Manweb needs to portray in a competitive electrical contracting market," said Ray Appleton.

"The package also has potential in the future to be linked directly to an estimating system for the purpose of automatically producing quotations."

Considerable effort is also being put into developing skills away from the office. Recently four Northern Region Contracting Electricians — Dave Richards, Andy Priestner, Paul Graham and Neil Webb — completed a six-week training course at Hoylake on low voltage jointing.

This is a first for Contracting, who have previously relied on external labour resources when requiring this type of work. The Electricians are to use their new skills by supporting their colleagues in Network Services when carrying out street lighting and utilities on behalf of Contracting.



**John Kenyon, Sefton Council's Electrical Clerk of Works (left) with Peter McKenzie, Manweb Site Agent at the Mersey House Flats.**

## Resourceful region!

**NORTHERN** Region has once again proved its resourcefulness by making good use of old assets in selecting a new depot.

Plans are afoot to retain a base on Merseyside even though the move of the majority of Northern Region staff to Birchwood, Warrington, is imminent.

The Contracting sub depot will be located at Vulcan Street, Liverpool, within a decommissioned 132kV transforming and switching station.

The building, which was acquired in 1972 when Manweb took over the

assets of the 132kV network from the CEGB, has proved to be yet another challenge for Northern Region, as it requires substantial refurbishment.

Work has started to bring Vulcan Street, which has not been inhabited for many years, up to a satisfactory standard of accommodation, including waterproofing, constructing offices and installation of security alarms.

When completed, the building will primarily be a base for all Northern Workshop Electricians.



**Electricians Paul Owens and Dave Loyley at work on the Vulcan Street site.**



# A new line in overhead planning

**Pipped at the post**

**WORKING** out where to position high voltage power lines has never been an easy job, and with stringent wayleave procedures and greater cost consciousness, getting the route exactly right has never been more important.

But a line planning system introduced by Central Field Unit Engineer Peter R Jones promises to reduce the problems of 132/33kV line siting.

To the uninitiated, positioning one high voltage power line may seem to be just a matter of drawing a route from point A to point B, working out how many poles or towers you need to keep it off the ground and then letting somebody else get on with the job of building it.

But, as ever, the reality is far from being so simple. Talk to Field Unit Surveyor Bill Jones and he will tell you enough tales about minimum line clearances, problematic wayleaves and unstable ground to convince you that positioning lines is far from straightforward.

The ability to thoroughly test out a route is an obvious advantage, but, until now, Manweb has lacked a package which would allow it to model lines in three dimensions, on computer and test out the options without cross reference between several systems and a great deal of manual input.

CFU Engineer Peter R Jones explains: "We have now bought a computer aided design package from an independent company, Optimal Software, which allows us to thoroughly test various configurations on screen for a new power line, showing clearances to buildings and other features.

"For example, if motorway extensions or bypasses require a 132kV or 33kV line diversion to be made the Optimal package will allow us to explore all the options. If there is concern about clearances we can check all of these on the system.

"Once the computer knows the type of support the line is using — poles, towers etc — it will produce the attachment point for the conductor, and will 'string' the line mathematically, taking into account the weight of the conductor used for the line."

Getting the site information into the stand alone desktop system is itself a hi-tech process, with state-of-the-art surveying equipment linked directly to a Husky Hunter hand-held computer terminal.

Far from being another layer

of technology to take on board, Surveyor Bill Jones feels that the theodolite-computer link reduces the chance of error, and there's always manual back up to feed expertise into the system.

Bill says: "The field gathering equipment has automatic distance finding, and you feed into it height, deviation from line, and any structures which need to be considered.

"Deviations in land level are changed automatically, and the Hunter processes the information as it goes. You can test for errors as you proceed with the survey."

CFU's previous system required the manual transfer of data from theodolite to computer before siting and clearance calculation could be performed.

The end result was a two-dimensional representation, making clearance calculation — particularly for three phase down-droppers, where conductors descend from a tower — extremely difficult.

With the Optimal system a three dimensional perspective picture is produced, with itsme colour coded and distances shown.

A library of towers and poles exists, so supports can be faithfully shown and features not read into the initial survey data, or changes in land level can be added as required.

The Optimal Software company who designed the package have been in operation for ten years, and is an acknowledged specialist in overhead line profiling systems and civil engineering survey work.

The new CFU system was developed specifically to meet the requirements of regional electricity companies and the National Grid Company.

For Manweb itself to have developed software of a similar capability would have tied up large amounts of capital and personnel, and upgrading the company's existing line planning system, Profile, would also have been a non-viable option.

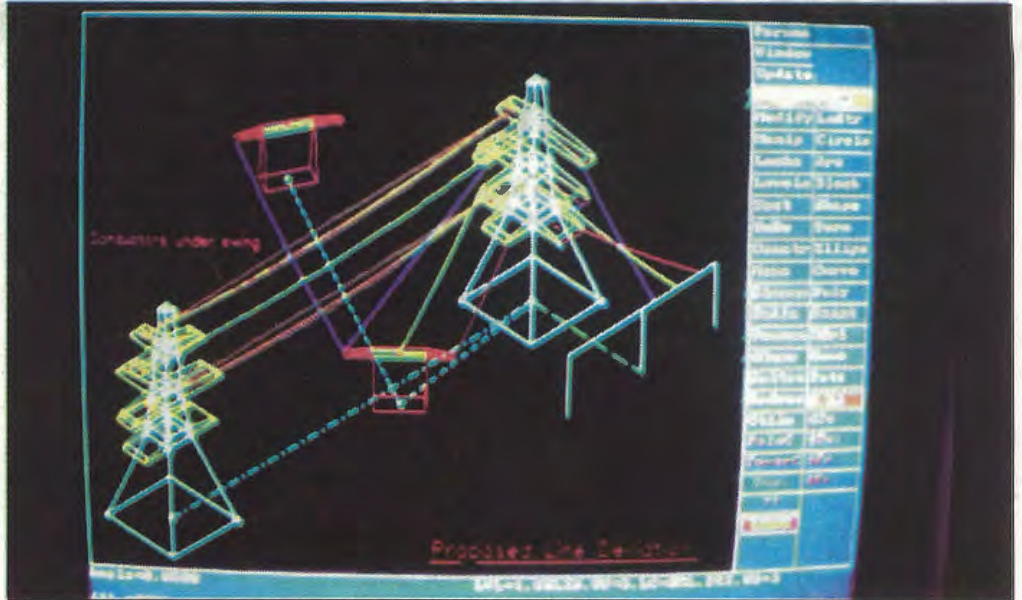
Other companies involved in overhead line construction are also using the Optimal system. This means survey data and construction details can be easily interchanged, which should help

by Graeme Cooper



Above: Bill Jones surveying with the help of a hand held computer which can be downloaded into the Optimal system.

Below: An example of the Optimal package's on-screen capability. Down droppers and line crossings are shown in three dimensions and colour.



keep down the overall cost of the work.

CFU System Manager Peter Hartley helped assess the package with Peter R Jones, and says its all-in purchase cost of around £50,000 will be totally recouped if the costs of erecting one additional steel tower are avoided by achieving better line positioning.

Since its purchase earlier this year the Optimal package has been proving its worth with, among other projects, planning routes for wind farm connections.

The next phase of the system's development will involve solving major 132kV line diversions resulting from the M57 motorway extension on Merseyside.

## Knights of the road

**MORE** letters of appreciation have been arriving at Manweb to congratulate staff on their first class customer service.

Mike Lawrence and Paul Brayne, of Network Services, Oswestry District, have been dubbed 'the knights of the road' by customer Mrs N Parkes, after they came to her rescue when her car broke down.

She wrote: "Out of the hundreds of cars which passed me, they were the only ones who stopped to see if I was all right. Fortunately help was already on its way, but had it not been, I am certain that the two gentlemen in the van would have come to my aid.

"They say the RAC are the knights of the road, but on this occasion Manweb was!"

Gwynedd staff have come in for praise from Ffestiniog customers C J Parker and M W Jones.

They wrote to say how much they appreciated Manweb's efforts to maintain their electricity supply during a recent shut down. "As owners of a shop in a rural district, to be without electricity would have been a severe blow to our business.

"It is good to know that a large company like yours can give consideration to individual needs."

Gwynedd's repair teams were also given a

pat on the back by Mr and Mrs C Briggs and Mr and Mrs B C Pullee, of the Pen-y-Gwryd Hotel, Nantgwynant, for their hard work to restore supplies in severe weather conditions.

"It is, as you realise, very important to us to keep the systems running with guests to look after. You have always been most helpful in this respect. Please let it be known that any of your men called out here to solve a problem will be welcome to a drink, hot or cold, along with anything else we can reasonably provide."

And Miss B J Courtney, of Rock Ferry, Birkenhead, wrote in to say how impressed she was with the service provided by North Wirral Electrician Glyn Jones, when he fitted a new control box on her intruder alarm.

"He first attended when the fault was reported, and his explanation of the fault was so thorough and understandable that I decided on my own volition to opt for the replacement, which was installed.

"Further to his knowledge and efficiency, he has a presentable manner, a credit to your company.

"Finally a word of thanks to the young lady who dealt with my initial enquiry and who kept me informed. She should also be commended for her helpful and pleasant telephone manner."



Peter R Jones (right) working on the Optimal system with Senior Records Draughtsman Rob Andrews.

**UNBEKNOWN** to most of Manweb, Information Services Business Systems have been running their own company!

But the 'moonlighting' isn't all it seems, for the firm was a simulated company set up for the Annual Manchester Business School Business Game.

Manweb finished third in a field of 20 teams from all over Britain. Below them were teams from Shell, Natwest Bank and Olympus as well as four teams from Norweb.

Brewers

Winners were a team from West Midlands brewers Allbright & Wilson.

Manweb's company was run by Senior Project Leader Ian Wainwright, Project Leader Sara Vincent, Senior Analyst/Programmers Helen Taylor and Jonathan Price and Analyst Programmers Andrew Risk and Mike Ward.

Ian Wainwright said: "Taking part was very enjoyable and also served as an excellent learning experience. The game has been of significant benefit to the people who have taken part this year and hopefully other members of the department will gain the same benefits by Business Systems entering a team in subsequent years."



# FREE ADS

## Holidays

**North Wales** - B&B en suite accommodation in converted barn, within area of outstanding natural beauty. Ideal base for walking, fishing, riding etc. Tel 082 42 4047 (Ruthin).

**Llandudno** - Branstone Hotel, privately owned and licensed. In a central, level position close to shops and promenade. Comfortable rooms with central heating, tea and coffee-making facilities, shaver points etc. Room and breakfast £14, dinner optional. Family rooms available with reductions for children. You are assured of a warm welcome at all times. Tel. 0492 876448.

**Machynlleth** - B&B self catering cottage situated outskirts of historic Mid Wales town. Sandy beaches of Aberdovey and Borth easily accessible. Sleeps 5 + cot, from £130 - £160 p.w. Ring Mrs Powell on 0654 702206.

**French Alps** - Between Annecy and La Clusaz. To let, a traditional Alpine farmhouse set high in the lovely Maningod Valley. Fully modernised accommodation on one level, three bedrooms, sleeps 6-8. Large open plan kitchen, dining and lounge area with balcony and large verandah. New shower room, separate toilet. Stunning views of the Aravis mountains. Skiing, tobogganing, skating in winter. Walking, sailing, swimming, riding in summer. Call P Moray on HO ext 2311 or Mrs Bennett on 051 342 7334 for availability and photos.

**Caravan** - 6-8 berth sited on Greenacres Holiday Park, Morfa Bychan, Porthmadog. Fridge and gas cooker, fitted kitchen. Clubhouse, heated swimming pool, tennis courts, bowling green, children's playground. Tel 0691 773708.

**Falaise** - Normandy, 18th Century farmhouse, large gardens, tastefully restored. Near historic market town, sleeps 4-6, from £100 pw. Tel. 0244 317820.

**Pwllheli** - North Wales, detached bungalow, sleeps 6. Superb views, fully equipped, inclusive of linen and electricity, convenient to all amenities. Tel. Pwllheli 612353.

**Colwyn Bay** - Swiss style Chalet, sleeps 6, electric heating. Bathroom, flush toilet, fridge, colour TV, garden and parking. Situated in beautiful woodland dell near Eirias Park and beach. Weekly rates or weekend or mid-week breaks. Tel. 051 678 9854.

**Caravan** - Luxury 6-berth, Talacre Beach, nr. Prestatyn. All amenities, satellite TV, award-winning site, club, sauna, swimming pool, tennis bowls, horse-riding, etc. Tel. Sue Wilson on 051-531 8755 or int. ext. 710 2338.

**Cumbria** - Newly appointed cottage. ETB 4-key commended. Peacefully situated on small farm. Hadrian's Wall area. Sleeps four. Short breaks available, open all year. No pets. Tel: 0228 75650.

**Costa del Sol** - Puerto Cabopino, situated between Marbella and Fuengirola. Superior 2-bed apartment, plus settee in lounge converts to 2 single beds. Superb views over yacht marina and sea, lovely beach and swimming pool. Ideal for family or golfing holiday. Supermarket, video bar, restaurant etc. on site. Fully equipped for self catering. Available for 2 weeks, Saturday October 10th to Saturday October 24th. Rental includes electricity, linen, towels and weekly maid service. Contact H. J. Bird, Southport (0704) 538645.

**Caravan** - Towyn, near Rhyl, six berth, two bedrooms, shower, fridge, fully fitted. From £75 per week. Tel: 0978 362615/352653.

**Pony Trekking** - and farm holidays. Accompanied one hour to full-day treks for novices or experienced riders. Holiday cottages available. Self-catering, bed and breakfast or half board. Licensed restaurant open to non-residents. Lunch, after-

noon tea, dinner. Private parties catered for. Further details: Hwylfa Ddafydd Country Farm Holidays, tel. Colwyn Bay 516965.

self. Relax in a family hotel and enjoy good home cooking and fully licensed bar. Weekly rates for B&B and evening meal, weekends or mid-week breaks. Ring Len or Sandy on 0745 334103 or 677 3003.

**Sailing Holidays** - Artemis Comet's 850 (28ft) bareboat charter, Moody 37, bareboat or skippered charter. Corfu based. Tuition available. Full inventory. Contact H. J. Hargrove on 0270 67556.

**Orlando** - Florida. To let, luxury holiday home on Buenaventura Lakes Golf and Country Club (15 mins from Disneyworld). 3 beds, 2 bathrooms, will accommodate up to 8 persons. Private swimming pool. Use residents' golf club. Full management service on hand. For further details ring 051 625 8202.

**Lanzarote** - Playa Blanca, 1 bed villa on small development with pool, bar, tennis court, luxury kitchen, lounge, private garden with BBQ. Available May and November. Tel. 051 336 8678

**Snowdonia** - Bungalow near Harlech with wide sea views, 3 double bedrooms with bunk/playroom with 6 bunks. Ideal for 1 or 2 families. TV, garden and ample parking. Prices from £150 to £250 per week. Tel: 051 336 1709.

**North Wales** - six berth caravan to let, fully equipped, peaceful countryside, 6 miles from Bala, £10 per day. Tel: 049084 208.

**Pembrokeshire** - Country bungalow near beaches. Sleeps 5, pets welcome. Ring 0437 731375.

**For Charter** - Luxury 56ft steel ketch, Uisce Beatha. Join us for the holidays of a lifetime cruising the beautiful Hebrides and West Coast of Scotland. Visit the islands of Jura, Mull and Skye. Luxury crewed yacht for 6 guests. No experience necessary, skipper looks after you. Good food and company in a relaxed atmosphere. Also ideal for incentives/promotions for staff and clients. Brochure on request, including details of winter season in Canaries. Telephone: Melford Charters on 051 207 4069.

**Jersey** - Ch  annel Islands. The Willows Hotel, Grand Vaux, St Saviour, Jersey JE2 4NB. New, purpose-built hotel, completed May 1991. One and a half miles from St Helier, situated in the lovely Grand Vaux Valley! All bedrooms en-suite, colour television, radio, direct dial telephones, tea and coffee-making facilities. Economy 7 electric heating, hair driers and shaving points. Choice of menu, also self catering apartment. Ten per cent discount to Manweb staff and retired employees, tel. 0534 36267.

**Ruthin** - B&B in converted barn. En-suite, private sitting room, excellent area for pony trekking, walking, fishing etc. Tel. 08242 4047.

**Benalmadena** - Costa Del Sol, studio apartment suitable for 2/3. Splendid pool and other amenities. Tel. J. Flanagan on Chester 341097.

**South of France** - Fresus, 6-berth mobile home on 4-star site with 4 swimming pools and all facilities. Available most dates until September 12 1992. Contact Robbie Hadden on 0686 625355 (evenings).

**Cornish Cottage** - with garden. Gwinear, Hayle. Peaceful countryside, convenient location, sleeps 2/4. Tel. 0736 850389.

**Llandudno** - Hollybank Edwardian Hotel. Small, friendly, non-smoking, elegant licensed hotel. Central position and with own car park. Full central heating and spotlessly clean. Spacious comfortable en-suite rooms with free colour TV and drinks facilities. Dinner optional - excellent cuisine. Nightly or weekly terms. Reductions for OAPs and children. SAE please for brochure to Mrs. R. Antrobus, Hollybank, St. David's Place, Llandudno LL30 2UG. Tel. 0492 878521.

## For sale

**Wedding Dress** - white satin, full skirt, size 14. Price £250 (cost £444 new). Also two peach figured satin bridesmaid dresses with underskirts, one to fit age 2-3, other to fit age 11-12; £75 each. All professionally made. Contact Peter Willows in Rhyl Stores, Clwyd int. ext. 770 2274, or

0745 339354.

**Snooker Table** - 4ft x 3ft Gins with balls, cues etc. £80. Mobile gas heater, as new, needs new gas bottle, £25. BBC Model B Computer, £50 o.n.o. Raleigh Arena boy's cycle, £10. Tel. 051 653 7346.

**Drum Kit** - Five piece, full size, as new, £250 o.n.o. Tel. 0691 654157 evenings.

**Caravan** - Compass Rallye, 1990, 2-berth, luxury specification. 3-way fridge, shower, hot water, double glazed, mains electric, cassette, toilet, as new, £5,500. Tel. D J Ellis on HO int. ext 3497 or 0352 740371 evenings.

**Caravan** - Luxury 2-berth Abbey GT213 (1986). Oven, fridge, shower, water heater, full electrics, spare wheel and jack, large awning plus many extras, £3,995. Tel. 0978 364677.

**Girls's Bicycle** - Barbican, 6-7 years, white, excellent condition, £50 o.n.o. Tel. 051 677 7128.

**Stereo system** - Bush (Midi) and CD, £150. Boosey & Hawkes Emper Flute, £100. Contact David H Williams at New Crane Street, ext. 427, or 0244 375933 (home).

## Property

**Chester - Desmond Court,** £39,950 o.n.o. Ground floor, one bedroom flat with living room, fully fitted kitchen with oven, hob and hood, sorbet bathroom suite. Telephone & tv point in living room, intercom system and smoke alarm in hall, carpets and Economy 7 heating throughout, private parking space. Enquiries to Lynda Taylor on HO int. ext. 2916 or 0244 376747.

**Liverpool - Woolton,** 2-bedroom bungalow. Fitted mirror fronted wardrobes, gas central heating, fitted kitchen, well-stocked easily cared for gardens. Situated in peaceful and sought-after cul-de-sac within walking distance of local amenities, £67,500. Tel. 051 428 9975.

**Greasby - Wirral,** spacious 3-bedroom bungalow with lounge, kitchen/breakfast room, bathroom, separate toilet, double garage, £89,500 o.n.o. Tel. 051 678 2604.

**Nr Chester** - 2-bedroom modernised end terrace cottage in Cheshire village. Completely refurbished, including hardwood double glazed windows, gas central heating. Replastered, rewired, replumbed etc, fitted kitchen. Feature sandstone walls and exposed beams, small garden, £69,950. Tel. 0829 40569 after 6pm.

**Bala** - Coloured Welsh stone cottage, double-fronted Grade II listed building, needs renovation. Offers around £30,000. Tel. Mrs Jones on 051 489 3138.

**Wallasey** - 4 bedroom house in Rice Lane, 2 entertaining, large kitchen, £35,950. Tel. Graeme Cooper, Head Office ext. 2099.

## Leisure

**New Year** - Join ex Manweb and CEBG employees on their 4th New Year holiday together, from December 30 to January 2 1993, at the El Marino Hotel, Torquay. Coach from Liverpool-Torquay-Liverpool. Accommodation full board. One half-day tour, entertainment and dancing at hotel each night. VAT at current rate, all rooms ensuite. Total price £135, insurance £7.90 extra if required. Enquiries to Mrs A McDonnell, Liverpool Electric Power and Lighting Sports and Welfare Club Retired Members Group, tel. 051 489 4880.

**Deep Sea Fishing** - Pwllheli, North Wales. Starlight offshore 27 turbo, fully equipped. Tel. Mark Lewis: 0925 860269.

**Guided tours** - Walks and talks. Discover more about the Merseyside area in the company of Brian King, a registered blue badge Mersey Guide. Find out about its fascinating history, architecture, development and the famous people who made it all happen. Tel. 051-526 4032.

**Tennis** - Liverpool Electric Supply Tennis Club welcomes new member, established or beginners. Club sessions Sunday am/pm and Wednesday evenings. League

matches played mid-week evenings. Contact Ken Rigby at Lister Drive, int. ext. 2170 or 051-254 1900.

## Personal

**Painter** - Decorator, artexing, property repairs. Free estimates, tel. 0244 549375.

**Plumbing** - Installations and repairs. Quality bathroom suites supplied and fitted, tiling if required. Competitive rates. Tel. G. Davies on 0244 372860.

**County Wills** - Make a Will. There is now a convenient method of making your Will. A consultant visits your home at a time to suit you. Private and confidential, anywhere in the Manweb area. Get a leaflet from your District Office or contact County Wills, 0477 33447.

**Astrological Charts** - Cast and interpreted. Approximately 2,500 words. topics include general personality, mind, emotions, relationships, career, family. Personal astrological aspects used. This is not just sign waffle. Would make an ideal birthday gift. £15. For more details or sample phone Sheila Walsh on 051 480 4524.

**10% Discount** - To all Manweb staff. Suits 'U' and Juliano Italia, two shops within the Albert Dock, Liverpool. Suits 'U' (formerly above 'L' for Leather) now at 5 Britannia Pavilion, Albert Dock, 051 707 0980. Juliano Italia, 14 Britannia Pavilion, Albert Dock, selling designer suits, jackets, shirts, etc. from Milan, Genoa and Naples. Fantastic styles, competitive prices. Both shops open 7 days a week, 10am to 6pm, free parking.

**Sea Fishing** - On board Miranda out of Holyhead, Anglesey. Deep sea, reef or wreck fishing. Trips arranged for 4 to 12 hours, licensed and insured for parties of 12. Boat; hire from £50. Rods, tackle and bait available. Contact Kevin Wright, Miranda Sea Angling, Mon Elfan, Moelfre, Anglesey, Gwynedd. Tel. 0248 88459.

**Wedding Photography** - Capture the informal pictures of bride, groom, guests, etc. that the official photographer misses. Let me by your 'back-up' photographer on the special day. 80 7.5" x 5" photos chosen from 100, £70. Contact Ken Smyth on H.O. int. ext. 3207 for details.

**Photographer** - Professional wedding and portrait. Let me create your wedding album, portfolios or portraits. Reasonable rates. Contact Matthew Harman on H.O. int. ext. 2777 or 0978 263448.

**Wedding Videos** - Your most important day saved forever. High quality colour and sound, a real professional service giving you just what you want. One price, no extras, everything throughout the day captured but no one embarrassed too much! 20 per cent discount for staff. Please ring if you would like to see examples - no obligation - Gemini Videos, 051 645 1549.

**Crazy Caricatures** - The ideal gift for any occasion, leaving parties, retirements, etc. 10 per cent discount for Manweb staff. Contact Sandra on 710 2332 (North Mersey int.).

PLEASE PRINT YOUR FREE AD. ON THIS COUPON OR ON PLAIN PAPER

(BLOCK CAPS PLEASE)

Name.....

Work place (or retired).....

Tel: .....

Send to: 'CONTACT' FREE ADS, MANWEB,  
SEALAND ROAD, CHESTER CH1 4LR

**Artist** - Portraits painted. No charge if customer is not satisfied. Tel. 0248 355592.

**Fishing Trips** - and pleasure cruises aboard the DTI vessel 'Cerismar' out of Beaumaris, Anglesey. Wreck, reef and general fishing. Pleasure cruises to Puffin Island. Competitive prices from £35. Full time skipper owner David Jones, 2nd Coxswain Beaumaris Lifeboat and member of the National Federation of Charter Skippers. Contact D. A. Jones on 0248 810746.

**Crystal Karaoke** - Laser, for private parties, office parties, weddings, etc., reasonable prices from £45. Tel. 0352 770 429.

**The Ferries** - Manweb's own trio are available for your Manweb function. Please contact P. Keenan, Q'ferry internal 4216 if you require first class live entertainment.

**A&R Photographic** - For your high quality wedding photographs and family portraits at highly competitive prices. Contact Ray Rowland on Chester (0244) 376369.

**Fly Fishery** - Gweryd Lodge, Llanarmon-yn-Ial, Mold. Superb fly fishing on a great 122-acre lake. Boats for hire. Contact John Stowell on 08243230.

**For all** your floor and wall tiling, contact J. W. French on 0492 583347 or Glyn Jones at Flint Shop. Over 30 years' experience.

## Vehicles

**Humber Sceptre** - 1963 Mk1, MOT June '92. Non runner, ideal for restore project. Was used daily last 10 years. Tel. P. Willows on Clwyd int. ext. 770 2274 or 0745 339354.

**Metro City** - D-reg, 3 months' tax, 2 months' MOT, 45,000 miles, £1,700. Contact Colin Roberts on HO int. ext. 2966 or 029 (home).

**Ford Granada 2.0 Ghia injection** - D-reg, 50,000 miles, Raven black, immaculate condition in and out, £4,000 ono. Genuine reason for sale. Contact M. L. Haslehurst (0244) 65423.

## Tuition

**Driving Lessons** - Robin Jones School of Motoring. Department of Transport approved driving instructor. Member of the Institute of Advanced Motorists, ROSPA Advanced Driving Certificate. Member of the Motor Schools of Great Britain. Special discount for Manweb members. Beginners to advanced, motorway course, dual control Metro. Free pick-up service. For details tel. 0831 584643 (daytime) or 051 339 8135 (evenings).

**Guitar Tuition** - Howard Evans, B.Mus. - classical guitar tuition in Aberystwyth area. Music reading and all aspects of playing and performance techniques. Associated Board examinations. Contact W M Evans, 0970 86755.



# Dee-lightful!

## Staff have a raft of fun in rund-raising river race

MANWEB staff had a splashing time when they took part in the Chester Raft Race on the River Dee.

Four rafts from New Crane Street were entered in the madcap annual charity event, which was held on the stretch of water between the Suspension Bridge and the old Dee Bridge.

And although they weren't first past the post, the Manweb crews took to their task like ducks to water and helped raise around £1,000 towards badly needed equipment for the Children's Ward at the Countess of Chester Hospital.

Chester and Ellesmere Port Section Manager Cliff James said: "All the rafts entered by New Crane Street managed to finish the race, although they didn't win.

"The crews were really good sports. They were covered in mud, dirty water and lots more besides, thrown at them by other teams. But our lot had a few tasty missiles of their own to return fire!"

Hundreds of people turned out to line the banks of the River Dee and watch the fun and games.

After the race the crews and their families enjoyed a barbecue in the sunshine and children took turns to ride on the rafts.

The largest of the four Manweb rafts was designed by Head Office staff based at the New Crane Street depot garage, and was ingeniously disguised as an Escort van!

### Crew

Crew members were Chris Keddie, Joe Roach, Nigel Davies, Collette Sarveswaran and Mike Troughton (Captain), all from New Crane Street, with John Allen Jones and John Sproston, from Legacy, and Bridle Road's Mike Stringman.

New Crane Street's Overhead Line Section's entry resembled a plastic egg crate and was manned by Andy McHarrie, Warren Finney, Simon Gildea, Rob Schroeder, Paul Newbrook, Neil

Mason, Albert Cooper and Chris Harper (Captain).

The Depot's Fitting Shop entered a raft based on a twin canoe design, crewed by Pete Bowker, John Mitchell, Graham Lane, Andrew Davies, Kevin Fullerton, Mark Gittins, John Knott and Ken Stokes (Captain).

Last but not least was a fourth craft designed with a Caribbean flavour and manned by Jimmy Locker, Geoff Howarth, Dave Edmunds, Clive Griffiths, Roy Lyon, Alvin Korchell, Sandra Parker and Arthur Hughes (Captain), representing various sections at New Crane Street.



Hundreds of people lined the banks of the River Dee as the raft racers made their way down the watery course.



**Picture Special by Mike Hall**

Above: Take that! Manweb's 'rafters' try to make waves for their rivals in hot pursuit.

Below: Over the weir for the next leg of the race.



Left: Messing about on the river. Two of the Manweb teams pelt each other with missiles in the race to get ahead.

SPORT

**Golfers take the rough with the smooth!**

MANWEB Golf Society's fourth meeting of the year took place at Wrexham Golf Club on June 26.

After the long dry spell, the course was expected to be hard and fast. However, the main talking point turned out to be the depth and thickness of the rough.

Those who strayed from the cut surface were severely punished, resulting in generally low scores.

But the rough didn't seem to bother the Captain, Howell Watson (Head Office) who won the Bernie Green Memorial Trophy with 41 points. Second was Paul Clare (North Mersey) with 39 points and third was Ray Morgan (Head Office) with 33 points.

The morning Greensome was won by Rob Norfolk (Dee Valley) and John Leatherbarrow (North Mersey).

The last meeting of the year (Captain's Day) will be held on September 5 at Oswestry Golf Club.

After four events, the leaders of the Order of Merit are:

Player	Total
H Watson	23
P Clare	22
I K Rodger	19
S Mackenzie	13
L Rigby	10
I Evans	10
D Malpas	10

The Inter-District competition took place at Padeswood and Buckley Golf Course on July 10, when 11 teams battled for the annual trophy.

After a keenly fought competition, the outcome was decided by just one point, with the Gwynedd team finishing runner up to the Captain's team.

The winning team comprised Howell Watson (Captain), Mark Pearson, Keith Spencer and Ian Stockdale, all from Head Office Information Services. The individual prize was won by Mark Pearson, on a card play off from Pete Tasker, of Mid Cheshire.

## Crossword solution

### ACROSS

6. Top Gear, 7. Camps, 9. Paddy, 10. Sultana, 12. Costa del Sol, 14. Max Bygraves, 18. Monkees, 19. Stork, 21. Beano.

### DOWN

1. Wogan, 2. Agadoo, 3. Tan, 4. Cartel, 5. Opinion, 8. Sundial, 11. Stagger, 13. Baronet, 15. Bikini, 16. Extras, 17. Trade, 20. Ark.

From page 2